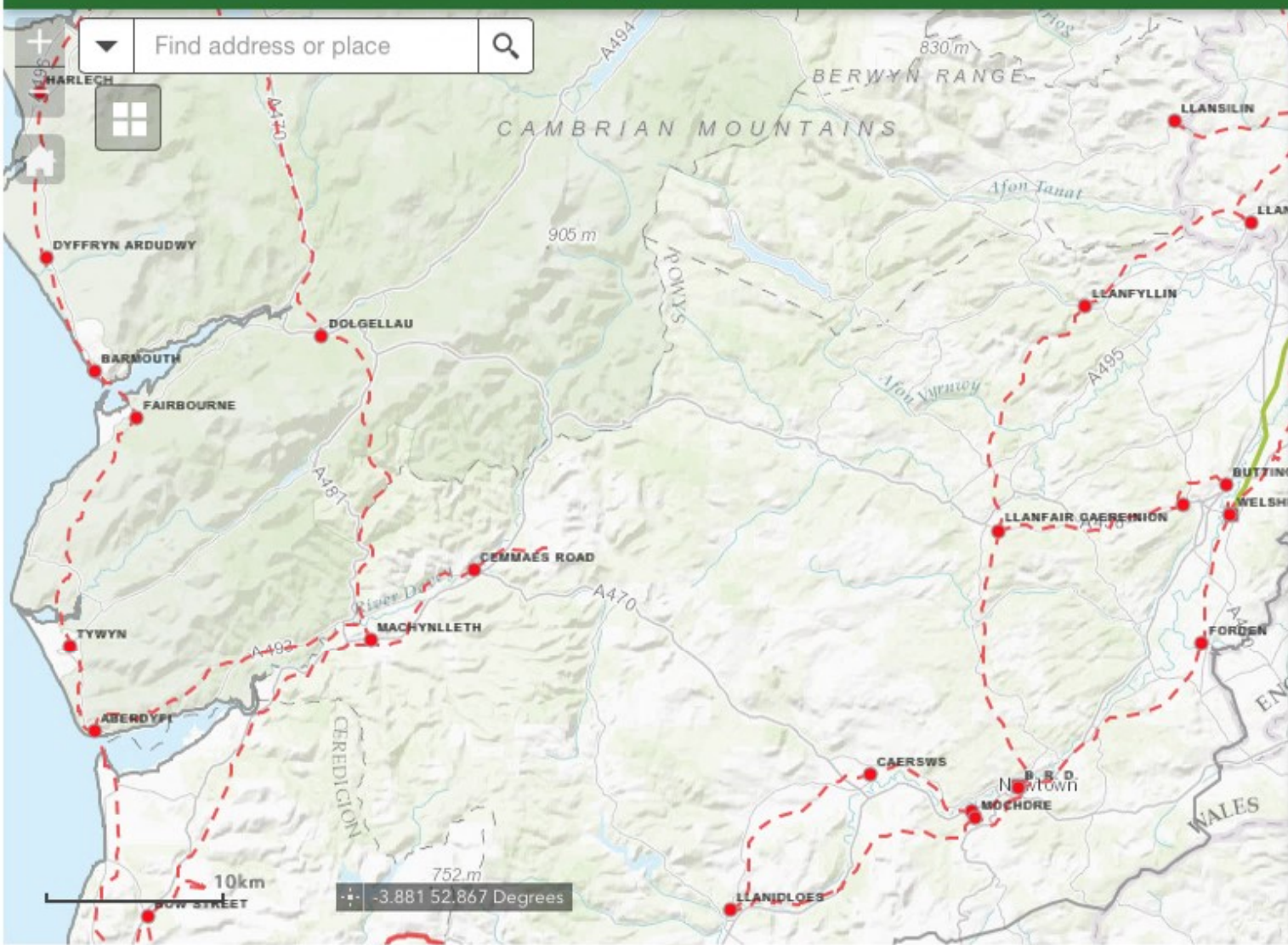


# Distributed Generation Heat Map Application



## About

This SP Energy Networks application provides an indication of the potential opportunities to connect Distributed Generation to the 11kV, 33kV and 132kV network in the SP Manweb plc licence area.

Each substation and circuit have been assigned one of the following categories:

**Category: Green** – All operational factors are within tolerable limits and so opportunities may exist to connect additional Distributed Generation without reinforcing the network (subject to detailed studies).

**Category: Amber** – At least one factor is nearing its operational limit and hence, depending on the nature of the application, network reinforcement may be required. However this can only be confirmed by detailed network analysis.

**Category: Red** – At least one factor is close to its operational limit and so installation of most levels of Distributed Generation and a local connection is highly unlikely. It may also require extensive reinforcement works or given the lack of a local connection, require an extensive amount of sole user assets to facilitate such a connection.

**Last Updated: February 2017**

- Alternative DG Connection Offers
- What Next ?
- User Guide

## Alternative DG Connection Offers

For Distribution Connection requests on constrained areas of our network, shown in red colour on the maps, please [click here](#) to explore alternative connection offers.